



# **Combined Non-Linear Pose Estimation from Points and Lines**

Bernhard Reinert  
Martin Schumann  
Stefan Müller

**Nr. 9/2011**

**Arbeitsberichte aus dem  
Fachbereich Informatik**

Die Arbeitsberichte aus dem Fachbereich Informatik dienen der Darstellung vorläufiger Ergebnisse, die in der Regel noch für spätere Veröffentlichungen überarbeitet werden. Die Autoren sind deshalb für kritische Hinweise dankbar. Alle Rechte vorbehalten, insbesondere die der Übersetzung, des Nachdruckes, des Vortrags, der Entnahme von Abbildungen und Tabellen – auch bei nur auszugsweiser Verwertung.

The “Arbeitsberichte aus dem Fachbereich Informatik“ comprise preliminary results which will usually be revised for subsequent publication. Critical comments are appreciated by the authors. All rights reserved. No part of this report may be reproduced by any means or translated.

### **Arbeitsberichte des Fachbereichs Informatik**

**ISSN (Print):** 1864-0346

**ISSN (Online):** 1864-0850

#### **Herausgeber / Edited by:**

Der Dekan:

Prof. Dr. Grimm

Die Professoren des Fachbereichs:

Prof. Dr. Bátori, Prof. Dr. Burkhardt, Prof. Dr. Diller, Prof. Dr. Ebert,  
Prof. Dr. Furbach, Prof. Dr. Grimm, Prof. Dr. Hampe, Prof. Dr. Harbusch,  
jProf. Dr. Kilian, Prof. Dr. von Korflesch, Prof. Dr. Lämmel, Prof. Dr. Lautenbach,  
Prof. Dr. Müller, Prof. Dr. Oppermann, Prof. Dr. Paulus, Prof. Dr. Priese,  
Prof. Dr. Rosendahl, jProf. Dr. Scherp, Prof. Dr. Schubert, Prof. Dr. Staab, Prof. Dr.  
Steigner, Prof. Dr. Sure, Prof. Dr. Troitzsch, Prof. Dr. Walsh, Prof. Dr. Wimmer, Prof.  
Dr. Zöbel

### **Kontakt Daten der Verfasser**

Bernhard Reinert, Martin Schumann, Stefan Müller

Institut für Computervisualistik

Fachbereich Informatik

Universität Koblenz-Landau

Universitätsstraße 1

D-56070 Koblenz

E-Mail: [breinert@uni-koblenz.de](mailto:breinert@uni-koblenz.de), [schumi@uni-koblenz.de](mailto:schumi@uni-koblenz.de), [stefanm@uni-koblenz.de](mailto:stefanm@uni-koblenz.de)

# Combined Non-Linear Pose Estimation from Points and Lines

Bernhard Reinert, Martin Schumann and Stefan Müller

University of Koblenz, Germany

---

## Abstract

*We present a non-linear camera pose estimator, which is able to handle a combined input of point and line feature correspondences. For three or more correspondences, the estimator works on any arbitrary number and choice of the feature type, which provides an estimation of the pose on a preferably small and flexible amount of 2D-3D correspondences. We also give an analysis of different minimization techniques, parametrizations of the pose data, and of error measurements between 2D and 3D data. These will be tested for the usage of point features, lines and the combination case. The result shows the most stable and fast working non-linear parameter set for pose estimation in model-based tracking.*

Categories and Subject Descriptors (according to ACM CCS): I.4.8 [Image Processing and Computer Vision]: Scene Analysis—Tracking

---

## 1. Introduction

Tracking is the process of estimating the viewing position and orientation of a camera - the pose. This can be achieved by two opposing approaches. While marker tracking relies on the recognition of known artificial structures in the camera image, markerless tracking is based on natural features of existing objects in the scene. In the latter one, the environment to be tracked can be represented by 3D data available from a modeling process or created online. Tracking on CAD models was introduced by [CMC03], and respectable success in combination of edges with texture information could be demonstrated by [VLF04]. Current research is focused on SLAM (Simultaneous Localisation and Mapping) algorithms [KM07] [SRD06], where feature cloud maps are reconstructed from the visible surroundings.

In the presence of a model, it is possible to establish 2D-3D correspondences between features of the model and the camera image, which leads to more stable tracking without drift occurrence and an absolute initialization which would not be feasible without a reference model. Thus the pose estimation problem is to minimize the distance between projected 3D features and their 2D correspondences in the camera image. The pose of a camera can be estimated by two contrasting classes of algorithms: the linear and non-linear ones. The first linearize the problem and derive a direct solution without any additional knowledge besides the corre-

spondences. The complexity is low, but noise and false correspondences may lead to inexact pose computation. The latter optimize an initial pose input by local linearization, which leads to a more exact approximation. This process is repeated iteratively until a pose of adequate accuracy is reached. Most of these pose algorithms originate from the domain of linear solutions and operate on point correspondences, some use line features. Combining both types is not a common task, especially when using non-linear optimization.

We construct a non-linear pose estimator that accepts point correspondences as well as line correspondences in arbitrary combination and number, assumed that at least three of them are given. First, we analyze several error measurements for the feature correspondences to be minimized by the optimization process. Then we take a look on the usability of common known optimization algorithms. Finally, we provide a discussion on possible parametrizations of the camera pose, including its constraints which must be taken into account during or after the optimization process. The complete analysis of optimization, error measurement and parametrization results in a combination of these components, most useful for practical applications concerning stability and real time capability.

Our resulting estimator will then be tested on ideal and noisy synthetic data. We investigate the behaviour on vari-

able input types and numbers of correspondences, as well as the influence of noise and false correspondences on the robustness of the pose. The main benefit of this estimator is the ability to work on a flexible range of number and type of features.

## 2. Related Work

The problem of camera pose estimation with 2D-3D correspondences of points is known as perspective-n-point problem (PnP) [FB81]. Based on the theorem of Grunert (1841), a system of equations is built using the law of cosine. This system results in a polynomial of forth degree with the known distances of at least three points in the world and their image points. It can be solved for the depth of the world points to the center of the camera which delivers the camera coordinates of the points, the coordinates of the camera center and the transformation between camera and world coordinate system.

There are several other approaches to the solution of P3P surveyed and compared for their numerical stability by [HLON94]. While these linear solutions work on a fixed number of three point correspondences, [LMNF09] introduce virtual control points to make possible a solution for arbitrary numbers of point correspondences (PnP) with linear complexity. Another popular linear solution is the POSIT algorithm [DD95] that begins with a paraperspective projection of world points and iteratively approximates the full perspective case. This approach has been extended to line correspondences by [CH99]. Another linear solution for any number of point or line correspondences is given by [AD03] but does not work on both types of features simultaneously.

Further, there are non-linear or indirect methods to estimate the camera pose. Most of them are based on classical iterative algorithms of optimization, like the Gauß-Newton or Levenberg-Marquardt-Method, which can be used in a broad context of problems, and particularly for the solution of sums of squared errors. Non-linear pose with line correspondences has been estimated by [KH94] who analyzed the influence of certain line representations on the optimization process. A solution using arbitrary line traits on an object is shown by [Low91]. Possible error measurements for point correspondences were analyzed by [LHM00], who also proposed a new possibility requiring less iterations.

While non-linear methods require an initial pose, an approximate linear solution can be given, which is then reiterated to gain a result more accurate. The image processing library OpenCV 2.1 delivers a function *solvePnP* for linear estimation of the camera pose by point correspondences. First, it is initialized by the Direct Linear Transform (DLT) [HZ04] and the result is refined by a Levenberg-Marquardt-Method.

Joint usage of point and line correspondences for a combined non-linear pose estimation together with a complete analysis of the parameters were not evident in the examined

literature and will therefore be the aim of our work. Most authors analyze one parametrization and a single error measurement only, which is the reason for us to take a broader view and deeper comparison on these topics.

## 3. Definitions

The pose problem can be described as the estimation of the extrinsic camera parameters relative to a known reference coordinate system, i.e. the world coordinate system, from given correspondences between 2D features of a camera image and 3D features of a synthetic model. The coordinate system of a value is identified by a superscript  $w$  for world-,  $c$  for camera-,  $i$  for image- and  $p$  for pixel-coordinate-system. The camera pose is represented in combination as a tuple consisting of a rotation matrix  $R \in \mathbb{R}^{3 \times 3}$  and a translation vector  $t^c \in \mathbb{R}^3$  as

$$C : (R, t^c) \quad (1)$$

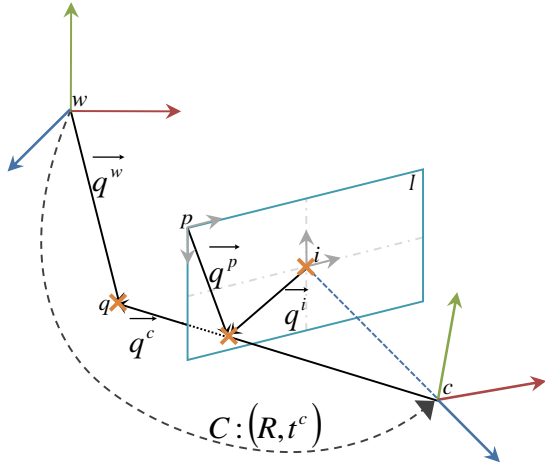
and represents the transformation between world- and camera-coordinate-system as  $p^c = Rp^w + t^c$ . The image-coordinate-system includes the perspectively projected camera points on the image plane and the pixel-coordinate-system the pixel values of the camera image with origin in the upper left corner of the image plane. The camera model is assumed to be an ideal pinhole camera with known intrinsic camera matrix

$$K = \begin{pmatrix} f_x & 0 & h_x \\ 0 & f_y & h_y \\ 0 & 0 & 1 \end{pmatrix}. \quad (2)$$

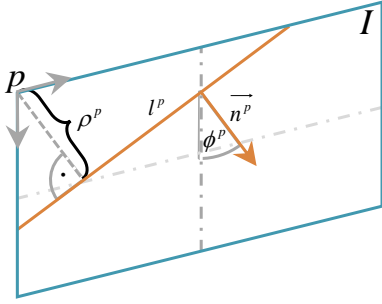
Hence, given a world point  $\vec{p}^w$ , its pixel coordinates  $\vec{p}^p$  are calculated by the perspective projection

$$\vec{p}^p = \begin{pmatrix} f_x \frac{p_x^w r_{11} + p_y^w r_{12} + p_z^w r_{13}}{p_x^w r_{31} + p_y^w r_{32} + p_z^w r_{33}} + h_x \\ h_y - f_y \frac{p_x^w r_{21} + p_y^w r_{22} + p_z^w r_{23}}{p_x^w r_{31} + p_y^w r_{32} + p_z^w r_{33}} \end{pmatrix}. \quad (3)$$

The connections between the different coordinate systems and their point vectors are shown in Fig. 1. The feature of the synthetical model in world coordinates is called synthetical feature and the feature of the camera image in pixel coordinates is called real feature; the vector in camera coordinates is also called sight vector. A point correspondence between the world point  $\vec{p}^w$  as the synthetical feature and the pixel point  $\vec{q}^p$  as the real feature is represented by a tuple  $k : (\vec{p}^w, \vec{q}^p)$ . The line features on the real camera images are defined as straight lines  $l : (\phi^p, \rho^p)$  with infinite extent.  $\phi^p$  represents the angle between the line normal and the y-axis of the accordant coordinate system and  $\rho^p$  is the orthogonal distance of the line from the origin (Fig. 2). Hence, for each point  $p^p \in l$  it holds  $\cos \phi^p p_x^p + \sin \phi^p p_y^p = \rho^p$ . A straight line correspondence is represented by two world points  $\vec{s}^w$  and  $\vec{e}^w$  (typically start- and endpoint) of the model as the synthetical feature and an image line  $l : (\phi^p, \rho^p)$  as the real feature by a tuple  $k : ((\vec{s}^w, \vec{e}^w), l)$ .



**Figure 1:** The pose problem and its relevant coordinate systems.



**Figure 2:** Line parametrization

#### 4. Error Measurements for Points

Since the aim is to minimize the distance between the transformed synthetic and real feature, error measurements, i.e. residuals, for correspondences have to be defined. We investigated three different point residuals which measure the error in different coordinate-systems (Fig. 3).

##### 4.1. Reprojection-Error

The well-known Reprojection-Error measures the distance between the real and the synthetic feature in pixel-coordinates. Hence, the residual for each correspondence becomes

$$\vec{r}^{RE} = \vec{p}^p - \vec{q}^p = \begin{pmatrix} p_x^p - q_x^p \\ p_y^p - q_y^p \end{pmatrix}. \quad (4)$$

##### 4.2. Object-Space-Error

The Object-Space-Error measures the distance in camera-coordinates and was introduced by [LHM00]. To recover the

depth for the real feature, its normalized sight vector is projected onto the synthetic sight vector. The resulting scalar is used to scale the normalized real sight vector and both sight vectors are then compared based on their camera coordinates. The residual per correspondence becomes

$$\vec{r}^{OE} = \begin{pmatrix} p_x^p - \langle \vec{q}^c, \vec{p}^c \rangle \hat{q}^p_x \\ p_y^p - \langle \vec{q}^c, \vec{p}^c \rangle \hat{q}^p_y \end{pmatrix}. \quad (5)$$

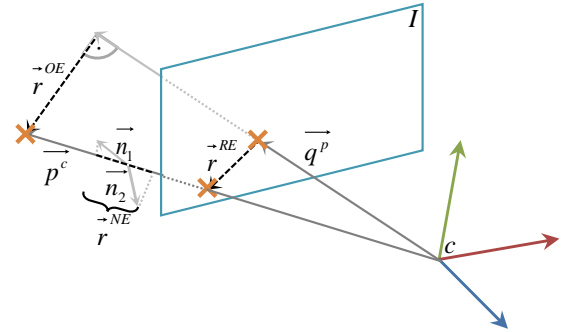
It has to be noted that points whose projections on the image plane are the same produce greater residuals for greater distances from the image plane, i.e. are not depth invariant.

##### 4.3. Normal-Error

The Normal-Space-Error also measures the distance in the camera-coordinates. From the real feature  $\vec{q}^c$  two orthogonal normals  $\vec{n}_1^c$  and  $\vec{n}_2^c$  can be created, describing the direction of the real sight vector in camera-coordinates. The dot product of these normals and the synthetic vector  $\vec{p}^c$  provides a measurement between real and synthetic features and the residual per correspondence becomes

$$\vec{r}^{NE} = \begin{pmatrix} \langle \vec{n}_1^c, \vec{p}^c \rangle \\ \langle \vec{n}_2^c, \vec{p}^c \rangle \end{pmatrix}. \quad (6)$$

The Normal-Space-Error is also not depth invariant.



**Figure 3:** Error measurements for points.

#### 5. Error Measurements for Lines

We investigated three different line residuals which measure the error in different coordinate-systems (Fig. 4).

##### 5.1. Angle-/Distance-Error

The Angle-/Distance-Error measures the differences of the angles and the distances of the real and synthetic feature. The start- and endpoint of the synthetic feature are transformed into their pixel points and then the conjunctive line

$\ell : (\varphi^p, d^p)$  is computed. The residual per correspondence then compares the parameters of both lines

$$\vec{r}^{AE} = \begin{pmatrix} \varphi^p - \phi^p \\ d^p - \rho^p \end{pmatrix} = \begin{pmatrix} \arctan \frac{e_x^p - s_x^p}{s_y^p - e_y^p} - \phi^p \\ \cos \phi^p e_x^p + \sin \phi^p e_y^p - \rho^p \end{pmatrix}. \quad (7)$$

Noteable for this error measurement is that the dimensions of the angle and the distance are not equal.

## 5.2. Line-Error

The Line-Error measures the distances of the start- and endpoint to the real line and is used, among others, by Lowe [Low91]. Both distances are computed in pixel-coordinates and hence have an equal dimension. The residual for each correspondence becomes

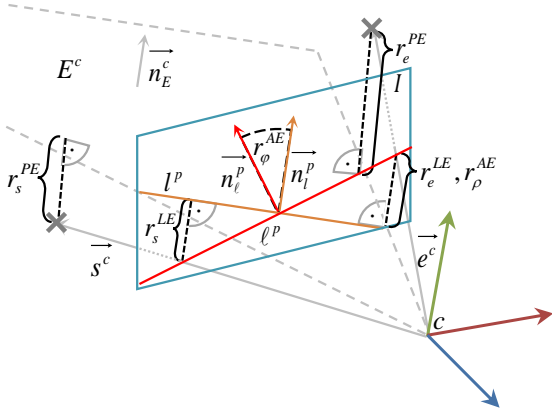
$$\vec{r}^{LE} = \begin{pmatrix} \cos \phi^p s_x^p + \sin \phi^p s_y^p - \rho^p \\ \cos \phi^p e_x^p + \sin \phi^p e_y^p - \rho^p \end{pmatrix}. \quad (8)$$

## 5.3. Plane-Error

The Plane-Error can be regarded as the Object-Space-Error extension for straight lines, i.e. the depth recovery of the real feature, and is used e.g. by [KH94]. The optical center and the image line define a plane  $E^c$  in camera coordinates with normal  $\vec{n}^c = (\cos \phi^i \quad \sin \phi^i \quad -\rho^i)^T$ . The residual for each correspondence becomes:

$$\vec{r}^{PE} = \frac{1}{|\vec{n}^c|} \begin{pmatrix} \langle \vec{n}^c, \vec{s}^c \rangle \\ \langle \vec{n}^c, \vec{e}^c \rangle \end{pmatrix}. \quad (9)$$

Similar to the Object-Space-Error, the Plane-Error is not depth invariant.



**Figure 4:** Error measurements for lines.

## 6. Optimization

The residuals of all correspondences are joined in one combined residual  $\vec{r}$ . The pose parameters for translation  $\vec{a}^t$  and rotation  $\vec{a}^R$  are combined in the parameter vector  $\vec{a}$ . The objective is to minimize the sum of the squared entries of this combined residual in terms of the pose parameters  $\vec{a}$ .

$$\operatorname{argmin}_{\vec{a}} \sum_{j=0}^{2m} r_j^2 \quad (10)$$

To solve this problem we used standard optimization techniques so that the parameter vector is turned into the sequence  $\langle \vec{a}_i \rangle$ . Since the Gauß-Newton optimization is comparatively fast but does not guarantee convergence and Gradient-Descent optimization is slow but guarantees convergence, we used the Levenberg-Marquardt optimization as described in [PTVF92] as a technique which guarantees convergence but is still comparatively fast. The iteration rule is  $\vec{a}_{i+1} = \vec{a}_i + \vec{\delta}$  with

$$\vec{\delta} = \left( J_{\vec{r}}(\vec{a}_i)^T J_{\vec{r}}(\vec{a}_i) + \lambda D \right)^{-1} J_{\vec{r}}(\vec{a}_i) \vec{r}(\vec{a}_i), \quad (11)$$

$D = \operatorname{diag} \left( J_{\vec{r}}(\vec{a}_i)^T J_{\vec{r}}(\vec{a}_i) \right)$  and  $J_{\vec{r}}$  the Jacobian matrix of  $\vec{r}$ .

We found the initial value of  $\lambda = 10^{-3}$  and an alteration rule of  $\lambda_i = \lambda_{i-1}/10$  for a residual decrease and  $\lambda_i = \lambda_{i-1} * 10^w$  with  $w \in \mathbb{N}$  for a residual increase of the last step to work best.

## 7. Parametrization

We also investigated the influence and conditions of different parametrizations of the pose as described in Eq. 1. Different parametrizations of the translation vector  $\vec{t}^c$  do not hold any major differences and it is therefore represented by three scalars  $t_x^c$ ,  $t_y^c$  and  $t_z^c$ , describing the translation in camera coordinates; the translation parameter vector is  $\vec{a}_t^c = \vec{t}^c$ .

For rotation parametrization we investigated four different choices. All rotations are described by their corresponding rotation matrices  $R$  and have to fulfill certain properties since  $R \in SO(\mathbb{R}, 3)$ , i.e. the special orthogonal group properties (SOP). In general, these properties can be assured at various stages of the optimization process:

### I. prior to optimization

By choosing an appropriate rotation parametrization the SOP can be assured partly or completely prior to the optimization process.

### II. during optimization

By adding the SOP as additional elements to the residual vector, these properties are optimized with the other residuals. A drawback of this alternative is that with the presence of imperfect or false correspondences the properties are not enforced but only minimized according to the least squares approach of the optimization.

### III. after optimization

By employing the singular value decomposition as described in [CM06], a rotation matrix  $\tilde{R}$  can be computed from the estimated rotation matrix  $R$  that assures the SOP and is similar to  $R$ .

These three possibilities are not exclusionary; alternative II. always has to be combined with alternative III. for the SOP to be fulfilled.

#### 7.1. Matrix-Parametrization

The parameter vector of the Matrix-Parametrization is  $\vec{a}^R = (i_x \ i_y \ i_z \ j_x \ j_y \ j_z \ k_x \ k_y \ k_z)^T$ . The rotation matrix is composed of three vectors  $\vec{i}, \vec{j}, \vec{k} \in \mathbb{R}^3$ :

$$R^M = \begin{pmatrix} i_x & i_y & i_z \\ j_x & j_y & j_z \\ k_x & k_y & k_z \end{pmatrix} \quad (12)$$

Advantageous is that the rotation matrix and its derivatives can easily be computed. However, the SOP are not enforced and alternatives II. and III. have to be used. Matrix  $R$  should form an orthonormal basis and have determinant +1. Both constraints are added to the residual to meet the SOP.

#### 7.2. Euler-Angles-Parametrization

The parameter vector of the Euler-Angles-Parametrization is  $\vec{a}^R = (\phi_x \ \phi_y \ \phi_z)^T$ . The rotation matrix is composed of three consecutive rotations around the coordinate axis:

$$R^E = R_{\phi_z} R_{\phi_y} R_{\phi_x} = \begin{pmatrix} c_y c_z - s_x s_y s_z & -c_x s_z & c_z s_y + c_y s_x s_z \\ c_y s_z + c_z s_x s_y & c_x c_z & s_y s_z + c_y c_z s_x \\ -c_x s_y & s_x & c_x c_y \end{pmatrix} \quad (13)$$

with  $c_x = \cos \phi_x$ ,  $c_y = \cos \phi_y$ ,  $c_z = \cos \phi_z$ ,  $s_x = \sin \phi_x$ ,  $s_y = \sin \phi_y$  and  $s_z = \sin \phi_z$ . The SOP are therefore enforced prior to optimization. Disadvantageous is the well-known gimbal lock and the extensive usage of trigonometric functions.

#### 7.3. Quaternion-Parametrization

The parameter vector of the Quaternion-Parametrization is  $\vec{a}^R = (w \ x \ y \ z)^T$ . The rotation matrix is composed by using a unit quaternion  $q : (w, x, y, z) \in \mathbb{H}$  with rotation axis  $v = (x, y, z)^T$  and rotation angle  $\phi = 2 \arccos w$ :

$$R^Q = \begin{pmatrix} w^2 + x^2 - y^2 - z^2 & 2(xy - wz) & 2(xz + wy) \\ 2(xy + wz) & w^2 - x^2 + y^2 - z^2 & 2(yz - wx) \\ 2(xz - wy) & 2(yz + wx) & w^2 - x^2 - y^2 + z^2 \end{pmatrix} \quad (14)$$

Since  $q$  has to be a unit quaternion, the SOP are not completely enforced and alternative II. and III. have to be employed with  $|q| = 1$  added to the residual. It is cogitable to substitute e.g.  $w$  in terms of  $x, y$  and  $z$  as  $w = \sqrt{1 - x^2 - y^2 - z^2}$ . Disadvantageous with quaternions is that there exist complex solutions for  $w$ .

#### 7.4. Rodrigues'-Formula-Parametrization

The parameter vector of the Rodrigues'-Formula-Parametrization is  $\vec{a}^R = (x \ y \ z)^T$ . The rotation matrix is composed by a rotation axis  $\vec{v} = (x, y, z)^T$  and a rotation angle  $\phi = |\vec{v}|$ :

$$R^R = \begin{pmatrix} \cos \phi + x^2 c_\phi & xy c_\phi - z s_\phi & ys_\phi - xz c_\phi \\ zs_\phi + xy c_\phi & \cos \phi + y^2 c_\phi & yz c_\phi - xs_\phi \\ xz c_\phi - ys_\phi & xs_\phi + yz c_\phi & \cos \phi + z^2 c_\phi \end{pmatrix} \quad (15)$$

with  $c_\phi = \frac{1 - \cos \phi}{\phi^2}$ ,  $s_\phi = \frac{\sin \phi}{\phi}$  and  $\phi = \sqrt{x^2 + y^2 + z^2}$ , or in case of  $\phi = 0$  it holds  $R_R = I_3$ . The SOP are guaranteed by this parametrization.

### 8. Scaling and Combination

Multiple different error measurements for each correspondence can be used for the combined residual vector. While generally each error measurement can be included without further consideration, regarding accuracy it is important to take a closer look on the influence of each correspondence on the estimated pose. In general, due to discretization and erroneous matching we cannot rely on perfect correspondences. Therefore, the weight of each correspondence becomes crucial for the estimated result as unequal weights shift the minima of the squared sum (Eq. 10) to different positions. In order to find the optimal least-squares value for all given correspondences, the dimensions of all entries of the residual have to be equal. Except for the Angle-/Distance-Error, all error measurements and SOP have a dimension of either pixel or camera points, and scaling factors for the respectively other dimension can easily be derived using the given camera matrix (Eq. 2).

Most notably, it is possible to join error measurements for points and lines in the combined residual and therefore estimate the pose using both types of correspondences. Hence, in absence of sufficient correspondences of one type of correspondences, the described approach is capable of estimating the pose using both feature types. Moreover, the approach enables the matching process to be more flexible as it can match points and lines (and by extension possibly other feature types) and be more restrictive regarding the quality of the matched correspondences; consequently the total number of correspondences of one type required to estimate the pose can be lowered.

### 9. Results

In order to find the best combination of error measurement and parametrization we tested them for point and line correspondences in a standard scenario. Because the problem of matching correspondences was beyond the scope of this paper, we used ideal correspondences between 3D model features and their projections to the image plane and added several levels of noise error in means of pixel displacement. We

used an image resolution of 640 x 480 pixel. To obtain a minimal set of correspondences as input features to the estimator, we selected model lines of maximal length and distance and model points of maximal distance. The object was then rotated and translated for fixed angle and distance from the initial pose 100.000 times and we listed mean error as well as standard derivation for translation, rotation and number of iterations. Rotation error is specified as frobenius norm of the difference matrix between real and estimated rotation, translation error is specified as euclidean norm of the translational difference vector.

First, we tested the influence of chosen error measurement and parametrization on the optimization stability for points (Fig. 5) and lines (Fig. 6). The estimator requires a minimum of three correspondences. However, we decided to use six correspondences for testing, as they are proven to deliver an unambiguous result always [GT06]. The error level was ten. On points the comparison of error measurements shows that the image based reprojection-error performs more accurate than the object-space-error and normal-error for all possible pose parametrizations. This can be explained by a potentially higher weighting of points in the object space when they are more distant from the camera center. The number of iterations are comparable while the object-space-error is slightly faster, except for Euler parametrization. The influence of the parametrization on the pose is neglectible, while Quaternions perform somewhat better and lead to less accurate translation estimation. For line correspondences, the angle-distance-error causes bad pose results and results in higher computation time. Line- and plane-error are comparable for all parametrizations. Again, the plane-error in object space is slightly faster, except for Euler parametrization. Quaternions are also faster for lines as it is the case for points.

The results lead to the decision for one error measurement, we use for further testing. The reprojection-error for points and the line-error for lines show the smallest pose error with all parametrizations and good computational speed. But the advantage of using pixel space error is, that scaling is not necessary to compensate depth differences between the correspondences. The Rodrigues formula proves as the best parametrization. All parametrizations may be comparable concerning accuracy, but Rodrigues is gimbal-lock free and it complies with the constraints of a rotation matrix by definition. Thus, there is neither need for additional entries in the residual vector to be optimized nor for a singular value decomposition to correct the result afterwards. Therefore, we use Rodrigues parametrization with reprojection- and line-error for the following tests on combined pose estimation.

We compared our combined pose estimator to state of the art algorithms: The method *solvePnP* of the OpenCV library, which also implements a Levenberg-Marquardt variant, and *ePnP* that solves for the pose with linear estimation first, followed by a Gauß-Newton refinement [LMNF09]. Both ac-

cept point correspondences as input only. The error level of the correspondences was increased step by step up to 20 pixel. As expected, the *ePnP* delivered bad results with growing error level. Our combined estimator showed the same performance on noisy correspondences as *solvePnP*. The pose error grows linearly with increasing error level in the correspondences. Another result is, that the required number of iterations depends on the error level of the correspondences, while it is hardly influenced by the total number of correspondences.

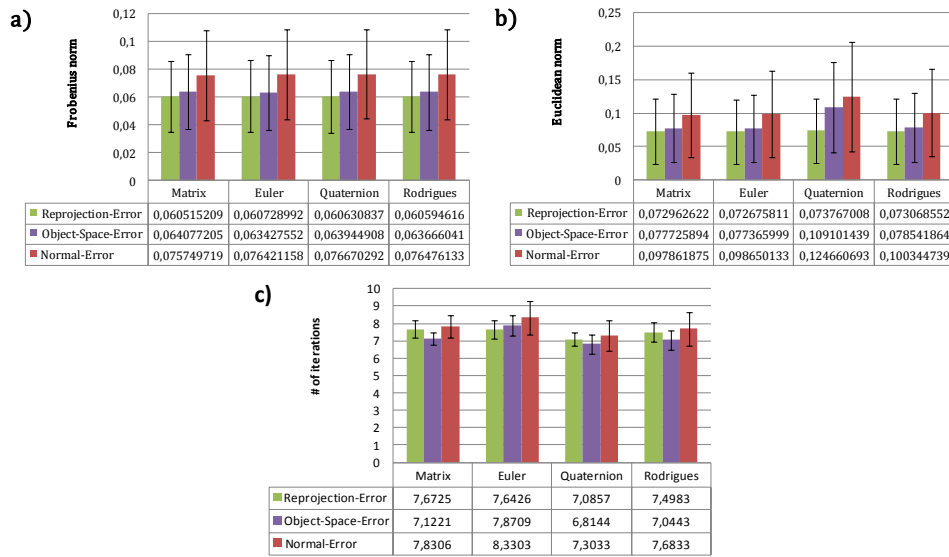
Finally, figure 7 shows the result of pose estimation on combined points and lines. We combined six correspondences of one feature type with zero to six of the other one. The error level was ten pixel. Obviously, adding line correspondences to a pose estimated by points declines the error in rotation and translation, while in the opposing case additional point correspondences show hardly a positive impact on pose exactness when the line estimate is already good. This is due to a generally higher stability of line features concerning displacement error. Point features will be affected stronger by growing correspondence errors than lines. We can state that a combination of point and line features is useful in practical application to stabilize the estimated pose, especially when there is only a minimal set of correspondences available. The combination of both feature types did not reduce computational speed, thus real time application is ensured.

## 10. Conclusion

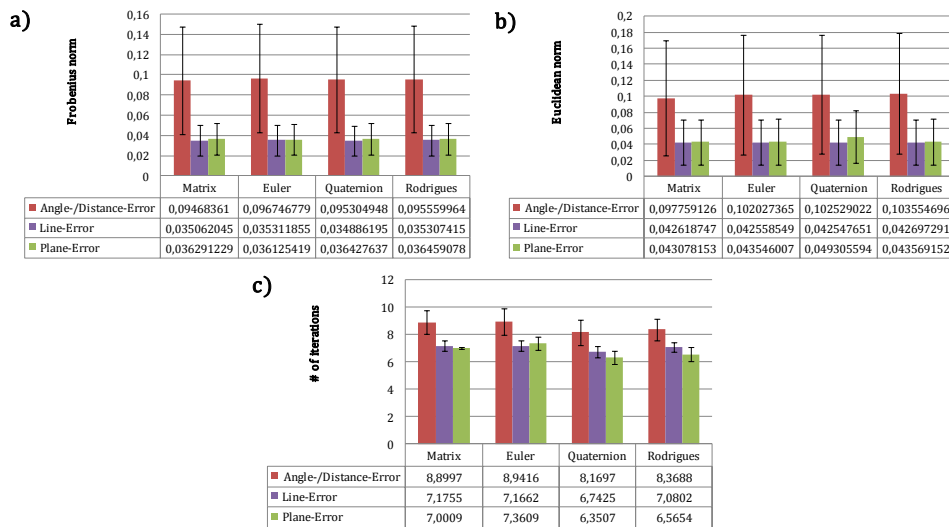
We presented a non-linear pose estimator that allows for combined input of point and line correspondences. It works on any arbitrary number and choice of the feature type greater three. While using a high number of correspondences is generally common for the reduction of the pose error, our estimator will improve the pose with as little correspondences as possible. Test results show that the error measurement in pixel coordinates is superior to the object-space-error for points as well as for lines. Further, we proved that the influence of the underlying pose parametrization on the optimization process is neglectible. Thus, a parametrization may be chosen which shows the best compliance with the constraints of a rotation matrix without additional computational load. This is the case for Rodrigues parametrization.

Our future focus will be on feature selection and matching. The presence of a 3D-model delivers information which can be used to predict features with high quality for every frame. The idea is a feature manager that will select and prioritize features upon criteria of geometry, projection, global simulation and success feedback from matching. This ensures a dynamic ranking of a few, but the best features as input to our pose estimator, e.g. when there is not a sufficient number of point correspondences for stable pose estimation, try to take additional line features or use only those, which fulfill certain predefined criteria. Selecting a minimal





**Figure 5:** Points: Error measurement and parametrization; rotation error in a), translation error in b) and number of iterations in c); standard deviation shown as positive and negative error indicator



**Figure 6:** Lines: Error measurement and parametrization; rotation error in a), translation error in b) and number of iterations in c); standard deviation shown as positive and negative error indicator

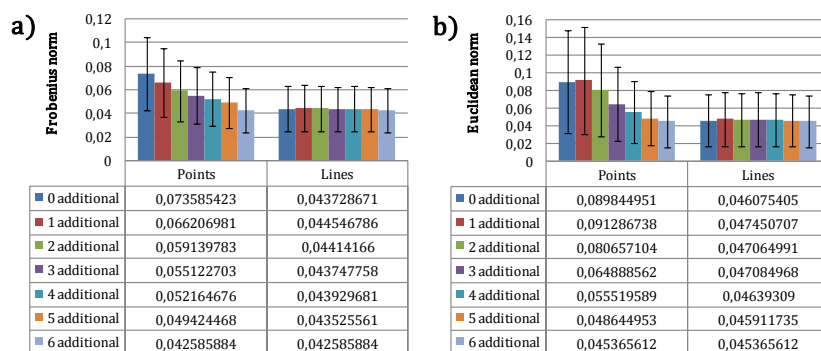
but qualitative set of features for tracking can reduce computation time significantly, which is desirable especially on mobile devices.

### Acknowledgements

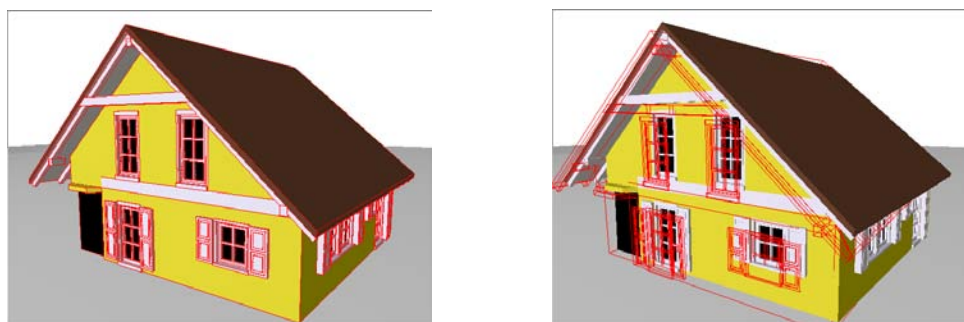
This work was supported by grant no. MU 2783/3-1 of the German Research Foundation (DFG).

### References

- [AD03] ANSAR A., DANIILIDIS K.: Linear Pose Estimation from Points or Lines. In *IEEE Transactions on Pattern Analysis and Machine Intelligence* (2003), vol. 25, pp. pp 578–589. 2
- [CH99] CHRISTY S., HORAUD R.: Iterative pose computation from line correspondences. *Computer Vision and Image Understanding* 73 (1999), pp 137–144. 2



**Figure 7:** Combination of points and lines; rotation error in a), translation error in b); standard deviation shown as positive and negative error indicator



**Figure 8:** Pose estimation (left: ideal, right: 10 pixel error)

- [CM06] CARMAN A., MILBURN P.: Determining rigid body transformation parameters from ill-conditioned spatial marker co-ordinates. *Journal of Biomechanics* 39(10) (2006), pp 1778–1786. 5
- [CMC03] COMPORT A., MARCH E., CHAUMETTE F.: A real-time tracker for markerless augmented reality. In *ACM/IEEE Int. Symp. on Mixed and Augmented Reality* (2003), pp. pp 36–45. 1
- [DD95] DEMENTHON D., DAVIS L.: Model-Based Object Pose in 25 Lines of Code. *International Journal of Computer Vision* 15 (1995), pp 123–141. 2
- [FB81] FISCHLER M. A., BOLLES R. C.: Random sample consensus: a paradigm for model fitting with applications to image analysis and automated cartography. *Communications of the ACM* 24 (1981), pp 381–395. 2
- [GT06] GAO X.-S., TANG J.: On the Probability of the Number of Solutions for the P4P Problem. *Journal of Mathematical Imaging and Vision* 25(1) (2006), pp 79–86. 6
- [HLON94] HARALICK B., LEE C.-N., OTTENBERG K., NÖLLE M.: Review and analysis of solutions of the three point perspective pose estimation problem. *International Journal of Computer Vision* 13(3) (1994), pp 331–356. 2
- [HZ04] HARTLEY R. I., ZISSERMAN A.: *Multiple View Geometry in Computer Vision*. New York: Cambridge University Press, 2004. 2
- [KH94] KUMAR R., HANSON A.: Robust methods for estimating pose and a sensitivity analysis. *Computer Vision Graphics and Image Processing: Image Understanding* 60(3) (1994), pp 313–342. 2, 4
- [KM07] KLEIN G., MURRAY D.: Parallel Tracking and Mapping for Small AR Workspaces. In *ACM/IEEE Int. Symp. on Mixed and Augmented Reality* (2007). 1
- [LHM00] LU C.-P., HAGER G., MJOLSNESS E.: Fast and Globally Convergent Pose Estimation from Video Images. *IEEE Transactions on Pattern Analysis and Machine Intelligence* 22(6) (2000), pp 610–622. 2, 3
- [LMNF09] LEPETIT V., MORENO-NOGUER F., FUA P.: EPnP: An Accurate O(n) Solution to the PnP Problem. *International Journal Of Computer Vision* 81 (2009), pp 155–166. 2, 6
- [Low91] LOWE D.: Fitting parameterized three-dimensional models to images. In *IEEE Transactions on Pattern Analysis and Machine Intelligence* (1991), vol. 13, pp. pp 441–450. 2, 4
- [PTVF92] PRESS W., TEUKOLSKY S., VETTERLING W., FLANNERY B.: *Numerical Recipes in C*, 2nd ed. Cambridge University Press, Cambridge, UK, 1992. 4
- [SRD06] SMITH P., REID I., DAVISON A.: Real-Time Monocular SLAM with Straight Lines. In *British Machine Vision Conference* (2006), vol. 1, pp. pp 17–26. 1
- [VLF04] VACCHETTI L., LEPETIT V., FUA P.: Combining edge and texture information for real-time accurate 3D camera tracking. In *ACM/IEEE Int. Symp. on Mixed and Augmented Reality* (2004), pp. pp 48–57. 1

## **Bisher erschienen**

### **Arbeitsberichte aus dem Fachbereich Informatik**

(<http://www.uni-koblenz-landau.de/koblenz/fb4/publications/Reports/arbeitsberichte>)

Bernhard Reinert, Martin Schumann, Stefan Müller, Combined Non-Linear Pose Estimation from Points and Lines, Arbeitsberichte aus dem Fachbereich Informatik 9/2011

Tina Walber, Ansgar Scherp, Steffen Staab, Towards the Understanding of Image Semantics by Gaze-based Tag-to-Region Assignments, Arbeitsberichte aus dem Fachbereich Informatik 8/2011

Alexander Kleinen, Ansgar Scherp, Steffen Staab, Mobile Facets – Faceted Search and Exploration of Open Social Media Data on a Touchscreen Mobile Phone, Arbeitsberichte aus dem Fachbereich Informatik 7/2011

Anna Lantsberg, Klaus G. Troitzsch, Towards A Methodology of Developing Models of E-Service Quality Assessment in Healthcare, Arbeitsberichte aus dem Fachbereich Informatik 6/2011

Ansgar Scherp, Carsten Saathoff, Thomas Franz, Steffen Staab, Designing Core Ontologies, Arbeitsberichte aus dem Fachbereich Informatik 5/2011

Oleg V. Kryuchin, Alexander A. Arzamastsev, Klaus G. Troitzsch, The prediction of currency exchange rates using artificial neural networks, Arbeitsberichte aus dem Fachbereich Informatik 4/2011

Klaus G. Troitzsch, Anna Lantsberg, Requirements for Health Care Related Websites in Russia: Results from an Analysis of American, British and German Examples, Arbeitsberichte aus dem Fachbereich Informatik 3/2011

Klaus G. Troitzsch, Oleg Kryuchin, Alexander Arzamastsev, A universal simulator based on artificial neural networks for computer clusters, Arbeitsberichte aus dem Fachbereich Informatik 2/2011

Klaus G. Troitzsch, Natalia Zenkova, Alexander Arzamastsev, Development of a technology of designing intelligent information systems for the estimation of social objects, Arbeitsberichte aus dem Fachbereich Informatik 1/2011

Kurt Lautenbach, A Petri Net Approach for Propagating Probabilities and Mass Functions, Arbeitsberichte aus dem Fachbereich Informatik 13/2010

Claudia Schon, Linkless Normal Form for ALC Concepts, Arbeitsberichte aus dem Fachbereich Informatik 12/2010

Alexander Hug, Informatik hautnah erleben, Arbeitsberichte aus dem Fachbereich Informatik 11/2010

Marc Santos, Harald F.O. von Kortzfleisch, Shared Annotation Model – Ein Datenmodell für kollaborative Annotationen, Arbeitsberichte aus dem Fachbereich Informatik 10/2010

Gerd Gröner, Steffen Staab, Categorization and Recognition of Ontology Refactoring Pattern, Arbeitsberichte aus dem Fachbereich Informatik 9/2010

Daniel Eißing, Ansgar Scherp, Carsten Saathoff, Integration of Existing Multimedia Metadata Formats and Metadata Standards in the M3O, Arbeitsberichte aus dem Fachbereich Informatik 8/2010

Stefan Scheglmann, Ansgar Scherp, Steffen Staab, Model-driven Generation of APIs for OWL-based Ontologies, Arbeitsberichte aus dem Fachbereich Informatik 7/2010

Daniel Schmeiß, Ansgar Scherp, Steffen Staab, Integrated Mobile Visualization and Interaction of Events and POIs, Arbeitsberichte aus dem Fachbereich Informatik 6/2010

Rüdiger Grimm, Daniel Pähler, E-Mail-Forensik – IP-Adressen und ihre Zuordnung zu Internet-Teilnehmern und ihren Standorten, Arbeitsberichte aus dem Fachbereich Informatik 5/2010

Christoph Ringelstein, Steffen Staab, PAPEL: Syntax and Semantics for Provenance-Aware Policy Definition, Arbeitsberichte aus dem Fachbereich Informatik 4/2010

Nadine Lindermann, Sylvia Valcárcel, Harald F.O. von Kortzfleisch, Ein Stufenmodell für kollaborative offene Innovationsprozesse in Netzwerken kleiner und mittlerer Unternehmen mit Web 2.0, Arbeitsberichte aus dem Fachbereich Informatik 3/2010

Maria Wimmer, Dagmar Lück-Schneider, Uwe Brinkhoff, Erich Schweighofer, Siegfried Kaiser, Andreas Wieber, Fachtagung Verwaltungsinformatik FTVI Fachtagung Rechtsinformatik FTRI 2010, Arbeitsberichte aus dem Fachbereich Informatik 2/2010

Max Braun, Ansgar Scherp, Steffen Staab, Collaborative Creation of Semantic Points of Interest as Linked Data on the Mobile Phone, Arbeitsberichte aus dem Fachbereich Informatik 1/2010

Marc Santos, Einsatz von „Shared In-situ Problem Solving“ Annotationen in kollaborativen Lern- und Arbeitsszenarien, Arbeitsberichte aus dem Fachbereich Informatik 20/2009

Carsten Saathoff, Ansgar Scherp, Unlocking the Semantics of Multimedia Presentations in the Web with the Multimedia Metadata Ontology, Arbeitsberichte aus dem Fachbereich Informatik 19/2009

Christoph Kahle, Mario Schaarschmidt, Harald F.O. von Kortzfleisch, Open Innovation: Kundenintegration am Beispiel von IPTV, Arbeitsberichte aus dem Fachbereich Informatik 18/2009

Dietrich Paulus, Lutz Priese, Peter Decker, Frank Schmitt, Pose-Tracking Forschungsbericht, Arbeitsberichte aus dem Fachbereich Informatik 17/2009

Andreas Fuhr, Tassilo Horn, Andreas Winter, Model-Driven Software Migration Extending SOMA, Arbeitsberichte aus dem Fachbereich Informatik 16/2009

Eckhard Großmann, Sascha Strauß, Tassilo Horn, Volker Riediger, Abbildung von grUML nach XSD soamig, Arbeitsberichte aus dem Fachbereich Informatik 15/2009

Kerstin Falkowski, Jürgen Ebert, The STOR Component System Interim Report, Arbeitsberichte aus dem Fachbereich Informatik 14/2009

Sebastian Magnus, Markus Maron, An Empirical Study to Evaluate the Location of Advertisement Panels by Using a Mobile Marketing Tool, Arbeitsberichte aus dem Fachbereich Informatik 13/2009

Sebastian Magnus, Markus Maron, Konzept einer Public Key Infrastruktur in iCity, Arbeitsberichte aus dem Fachbereich Informatik 12/2009

Sebastian Magnus, Markus Maron, A Public Key Infrastructure in Ambient Information and Transaction Systems, Arbeitsberichte aus dem Fachbereich Informatik 11/2009

Ammar Mohammed, Ulrich Furbach, Multi-agent systems: Modeling and Verification using Hybrid Automata, Arbeitsberichte aus dem Fachbereich Informatik 10/2009

Andreas Sprotte, Performance Measurement auf der Basis von Kennzahlen aus betrieblichen Anwendungssystemen: Entwurf eines kennzahlengestützten Informationssystems für einen Logistikdienstleister, Arbeitsberichte aus dem Fachbereich Informatik 9/2009

Gwendolin Garbe, Tobias Hausen, Process Commodities: Entwicklung eines Reifegradmodells als Basis für Outsourcingentscheidungen, Arbeitsberichte aus dem Fachbereich Informatik 8/2009

Petra Schubert et. al., Open-Source-Software für das Enterprise Resource Planning, Arbeitsberichte aus dem Fachbereich Informatik 7/2009

Ammar Mohammed, Frieder Stolzenburg, Using Constraint Logic Programming for Modeling and Verifying Hierarchical Hybrid Automata, Arbeitsberichte aus dem Fachbereich Informatik 6/2009

Tobias Kippert, Anastasia Meletiadou, Rüdiger Grimm, Entwurf eines Common Criteria-Schutzprofils für Router zur Abwehr von Online-Überwachung, Arbeitsberichte aus dem Fachbereich Informatik 5/2009

Hannes Schwarz, Jürgen Ebert, Andreas Winter, Graph-based Traceability – A Comprehensive Approach. Arbeitsberichte aus dem Fachbereich Informatik 4/2009

Anastasia Meletiadou, Simone Müller, Rüdiger Grimm, Anforderungsanalyse für Risk-Management-Informationssysteme (RMIS), Arbeitsberichte aus dem Fachbereich Informatik 3/2009

Ansgar Scherp, Thomas Franz, Carsten Saathoff, Steffen Staab, A Model of Events based on a Foundational Ontology, Arbeitsberichte aus dem Fachbereich Informatik 2/2009

Frank Bohdanovicz, Harald Dickel, Christoph Steigner, Avoidance of Routing Loops, Arbeitsberichte aus dem Fachbereich Informatik 1/2009

Stefan Ameling, Stephan Wirth, Dietrich Paulus, Methods for Polyp Detection in Colonoscopy Videos: A Review, Arbeitsberichte aus dem Fachbereich Informatik 14/2008

Tassilo Horn, Jürgen Ebert, Ein Referenzschema für die Sprachen der IEC 61131-3, Arbeitsberichte aus dem Fachbereich Informatik 13/2008

Thomas Franz, Ansgar Scherp, Steffen Staab, Does a Semantic Web Facilitate Your Daily Tasks?, Arbeitsberichte aus dem Fachbereich Informatik 12/2008

Norbert Frick, Künftige Anforderungen an ERP-Systeme: Deutsche Anbieter im Fokus, Arbeitsberichte aus dem Fachbereich Informatik 11/2008

Jürgen Ebert, Rüdiger Grimm, Alexander Hug, Lehramtsbezogene Bachelor- und Masterstudiengänge im Fach Informatik an der Universität Koblenz-Landau, Campus Koblenz, Arbeitsberichte aus dem Fachbereich Informatik 10/2008

Mario Schaarschmidt, Harald von Kortzfleisch, Social Networking Platforms as Creativity Fostering Systems: Research Model and Exploratory Study, Arbeitsberichte aus dem Fachbereich Informatik 9/2008

Bernhard Schueler, Sergej Sizov, Steffen Staab, Querying for Meta Knowledge, Arbeitsberichte aus dem Fachbereich Informatik 8/2008

Stefan Stein, Entwicklung einer Architektur für komplexe kontextbezogene Dienste im mobilen Umfeld, Arbeitsberichte aus dem Fachbereich Informatik 7/2008

Matthias Bohnen, Lina Brühl, Sebastian Bzdak, RoboCup 2008 Mixed Reality League Team Description, Arbeitsberichte aus dem Fachbereich Informatik 6/2008

Bernhard Beckert, Reiner Hähnle, Tests and Proofs: Papers Presented at the Second International Conference, TAP 2008, Prato, Italy, April 2008, Arbeitsberichte aus dem Fachbereich Informatik 5/2008

Klaas Dellschaft, Steffen Staab, Unterstützung und Dokumentation kollaborativer Entwurfs- und Entscheidungsprozesse, Arbeitsberichte aus dem Fachbereich Informatik 4/2008

Rüdiger Grimm: IT-Sicherheitsmodelle, Arbeitsberichte aus dem Fachbereich Informatik 3/2008

Rüdiger Grimm, Helge Hundacker, Anastasia Meletiadou: Anwendungsbeispiele für Kryptographie, Arbeitsberichte aus dem Fachbereich Informatik 2/2008

Markus Maron, Kevin Read, Michael Schulze: CAMPUS NEWS – Artificial Intelligence Methods Combined for an Intelligent Information Network, Arbeitsberichte aus dem Fachbereich Informatik 1/2008

Lutz Priese, Frank Schmitt, Patrick Sturm, Haojun Wang: BMBF-Verbundprojekt 3D-RETISEG Abschlussbericht des Labors Bilderkennen der Universität Koblenz-Landau, Arbeitsberichte aus dem Fachbereich Informatik 26/2007

Stephan Philippi, Alexander Pinl: Proceedings 14. Workshop 20.-21. September 2007 Algorithmen und Werkzeuge für Petrinetze, Arbeitsberichte aus dem Fachbereich Informatik 25/2007

Ulrich Furbach, Markus Maron, Kevin Read: CAMPUS NEWS – an Intelligent Bluetooth-based Mobile Information Network, Arbeitsberichte aus dem Fachbereich Informatik 24/2007

Ulrich Furbach, Markus Maron, Kevin Read: CAMPUS NEWS - an Information Network for Pervasive Universities, Arbeitsberichte aus dem Fachbereich Informatik 23/2007

Lutz Priese: Finite Automata on Unranked and Unordered DAGs Extended Version, Arbeitsberichte aus dem Fachbereich Informatik 22/2007

Mario Schaarschmidt, Harald F.O. von Kortzfleisch: Modularität als alternative Technologie- und Innovationsstrategie, Arbeitsberichte aus dem Fachbereich Informatik 21/2007

Kurt Lautenbach, Alexander Pinl: Probability Propagation Nets, Arbeitsberichte aus dem Fachbereich Informatik 20/2007

Rüdiger Grimm, Farid Mehr, Anastasia Meletiadou, Daniel Pähler, Ilka Uerz: SOA-Security, Arbeitsberichte aus dem Fachbereich Informatik 19/2007

Christoph Wernhard: Tableaux Between Proving, Projection and Compilation, Arbeitsberichte aus dem Fachbereich Informatik 18/2007

Ulrich Furbach, Claudia Obermaier: Knowledge Compilation for Description Logics, Arbeitsberichte aus dem Fachbereich Informatik 17/2007

Fernando Silva Parreiras, Steffen Staab, Andreas Winter: TwoUse: Integrating UML Models and OWL Ontologies, Arbeitsberichte aus dem Fachbereich Informatik 16/2007

Rüdiger Grimm, Anastasia Meletiadou: Rollenbasierte Zugriffskontrolle (RBAC) im Gesundheitswesen, Arbeitsberichte aus dem Fachbereich Informatik 15/2007

Ulrich Furbach, Jan Murray, Falk Schmidsberger, Frieder Stolzenburg: Hybrid Multiagent Systems with Timed Synchronization-Specification and Model Checking, Arbeitsberichte aus dem Fachbereich Informatik 14/2007

Björn Pelzer, Christoph Wernhard: System Description: "E-KRHyper", Arbeitsberichte aus dem Fachbereich Informatik, 13/2007

Ulrich Furbach, Peter Baumgartner, Björn Pelzer: Hyper Tableaux with Equality, Arbeitsberichte aus dem Fachbereich Informatik, 12/2007

Ulrich Furbach, Markus Maron, Kevin Read: Location based Information systems, Arbeitsberichte aus dem Fachbereich Informatik, 11/2007

Philipp Schaer, Marco Thum: State-of-the-Art: Interaktion in erweiterten Realitäten, Arbeitsberichte aus dem Fachbereich Informatik, 10/2007

Ulrich Furbach, Claudia Obermaier: Applications of Automated Reasoning, Arbeitsberichte aus dem Fachbereich Informatik, 9/2007

Jürgen Ebert, Kerstin Falkowski: A First Proposal for an Overall Structure of an Enhanced Reality Framework, Arbeitsberichte aus dem Fachbereich Informatik, 8/2007

Lutz Priebe, Frank Schmitt, Paul Lemke: Automatische See-Through Kalibrierung, Arbeitsberichte aus dem Fachbereich Informatik, 7/2007

Rüdiger Grimm, Robert Krimmer, Nils Meißner, Kai Reinhard, Melanie Volkamer, Marcel Weinand, Jörg Helbach: Security Requirements for Non-political Internet Voting, Arbeitsberichte aus dem Fachbereich Informatik, 6/2007

Daniel Bildhauer, Volker Riediger, Hannes Schwarz, Sascha Strauß, „grUML – Eine UML-basierte Modellierungssprache für T-Graphen“, Arbeitsberichte aus dem Fachbereich Informatik, 5/2007

Richard Arndt, Steffen Staab, Raphaël Troncy, Lynda Hardman: Adding Formal Semantics to MPEG-7: Designing a Well Founded Multimedia Ontology for the Web, Arbeitsberichte aus dem Fachbereich Informatik, 4/2007

Simon Schenk, Steffen Staab: Networked RDF Graphs, Arbeitsberichte aus dem Fachbereich Informatik, 3/2007

Rüdiger Grimm, Helge Hundacker, Anastasia Meletiadou: Anwendungsbeispiele für Kryptographie, Arbeitsberichte aus dem Fachbereich Informatik, 2/2007

Anastasia Meletiadou, J. Felix Hampe: Begriffsbestimmung und erwartete Trends im IT-Risk-Management, Arbeitsberichte aus dem Fachbereich Informatik, 1/2007

#### **„Gelbe Reihe“**

(<http://www.uni-koblenz.de/fb4/publikationen/gelbereihe>)

Lutz Priebe: Some Examples of Semi-rational and Non-semi-rational DAG Languages. Extended Version, Fachberichte Informatik 3-2006

Kurt Lautenbach, Stephan Philippi, and Alexander Pinl: Bayesian Networks and Petri Nets, Fachberichte Informatik 2-2006

Rainer Gimnich and Andreas Winter: Workshop Software-Reengineering und Services, Fachberichte Informatik 1-2006

Kurt Lautenbach and Alexander Pinl: Probability Propagation in Petri Nets, Fachberichte Informatik 16-2005

Rainer Gimnich, Uwe Kaiser, and Andreas Winter: 2. Workshop "Reengineering Prozesse" – Software Migration, Fachberichte Informatik 15-2005

Jan Murray, Frieder Stolzenburg, and Toshiaki Arai: Hybrid State Machines with Timed Synchronization for Multi-Robot System Specification, Fachberichte Informatik 14-2005

Reinhold Letz: FTP 2005 – Fifth International Workshop on First-Order Theorem Proving, Fachberichte Informatik 13-2005

Bernhard Beckert: TABLEAUX 2005 – Position Papers and Tutorial Descriptions, Fachberichte Informatik 12-2005

Dietrich Paulus and Detlev Droege: Mixed-reality as a challenge to image understanding and artificial intelligence, Fachberichte Informatik 11-2005

Jürgen Sauer: 19. Workshop Planen, Scheduling und Konfigurieren / Entwerfen, Fachberichte Informatik 10-2005

Pascal Hitzler, Carsten Lutz, and Gerd Stumme: Foundational Aspects of Ontologies, Fachberichte Informatik 9-2005

Joachim Baumeister and Dietmar Seipel: Knowledge Engineering and Software Engineering, Fachberichte Informatik 8-2005

Benno Stein and Sven Meier zu Eißén: Proceedings of the Second International Workshop on Text-Based Information Retrieval, Fachberichte Informatik 7-2005

Andreas Winter and Jürgen Ebert: Metamodel-driven Service Interoperability, Fachberichte Informatik 6-2005

Joschka Boedecker, Norbert Michael Mayer, Masaki Ogino, Rodrigo da Silva Guerra, Masaaki Kikuchi, and Minoru Asada: Getting closer: How Simulation and Humanoid League can benefit from each other, Fachberichte Informatik 5-2005

Torsten Gipp and Jürgen Ebert: Web Engineering does profit from a Functional Approach, Fachberichte Informatik 4-2005

Oliver Obst, Anita Maas, and Joschka Boedecker: HTN Planning for Flexible Coordination Of Multiagent Team Behavior, Fachberichte Informatik 3-2005

Andreas von Hessling, Thomas Kleemann, and Alex Sinner: Semantic User Profiles and their Applications in a Mobile Environment, Fachberichte Informatik 2-2005

Heni Ben Amor and Achim Rettinger: Intelligent Exploration for Genetic Algorithms – Using Self-Organizing Maps in Evolutionary Computation, Fachberichte Informatik 1-2005